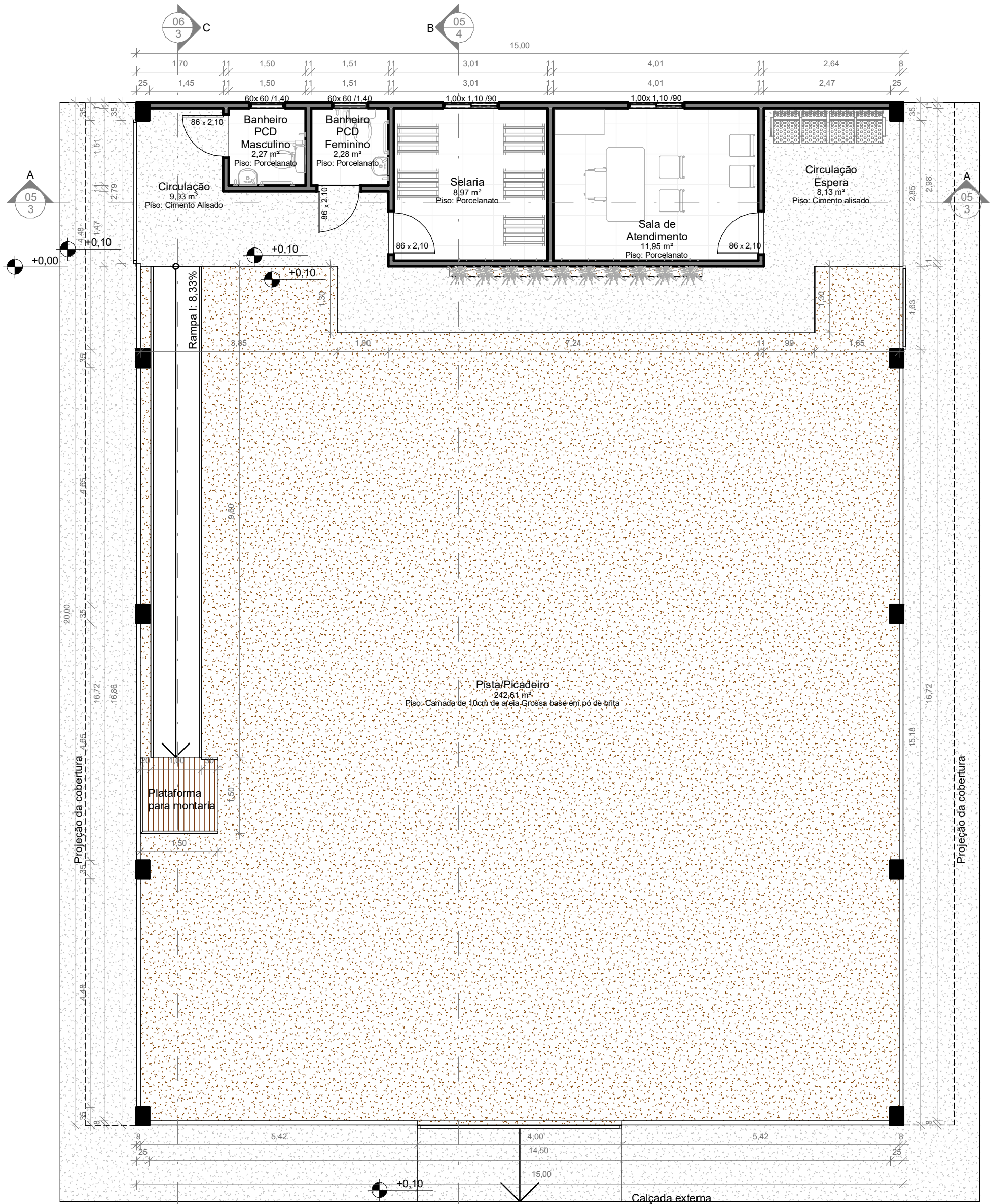


Projeto Arquitetônico do Pavilhão da Equoterapia da Universidade de Cruz Alta

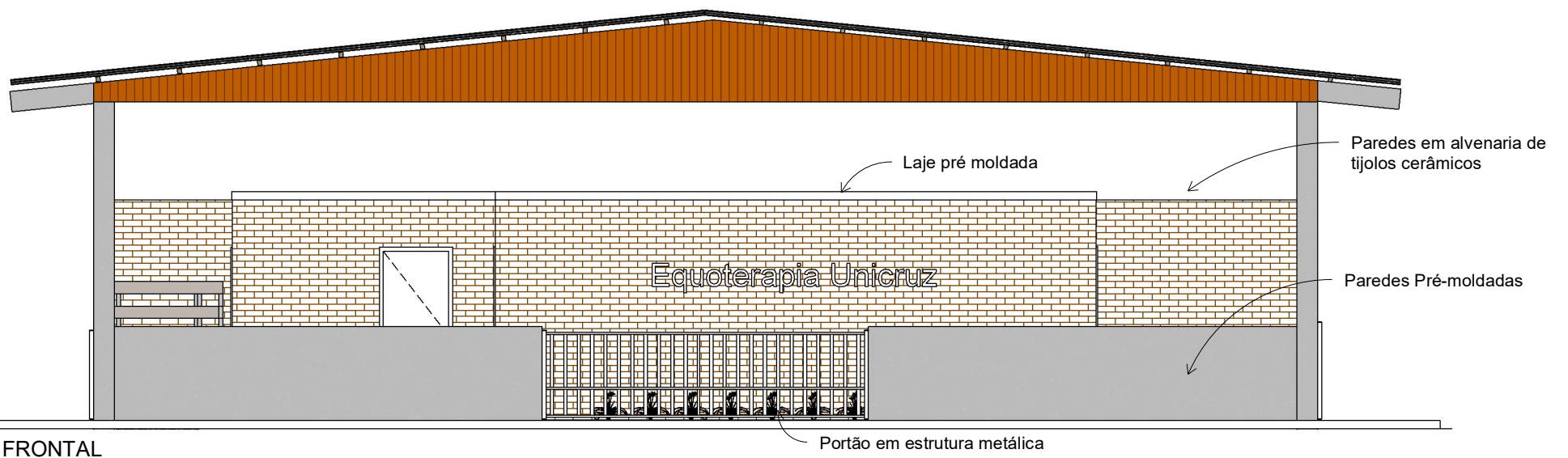


1 PLANTA BAIXA
ESCALA 1 : 75

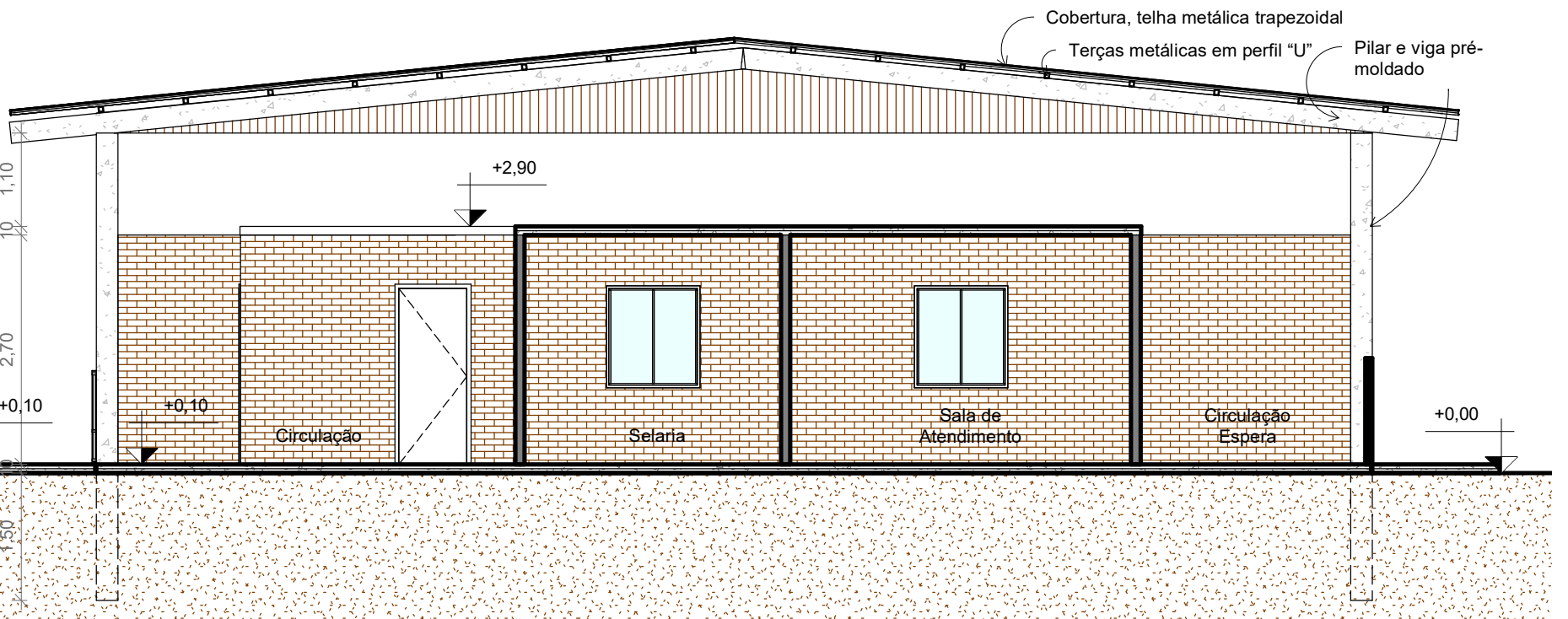


ADMINISTRAÇÃO DO CAMPUS

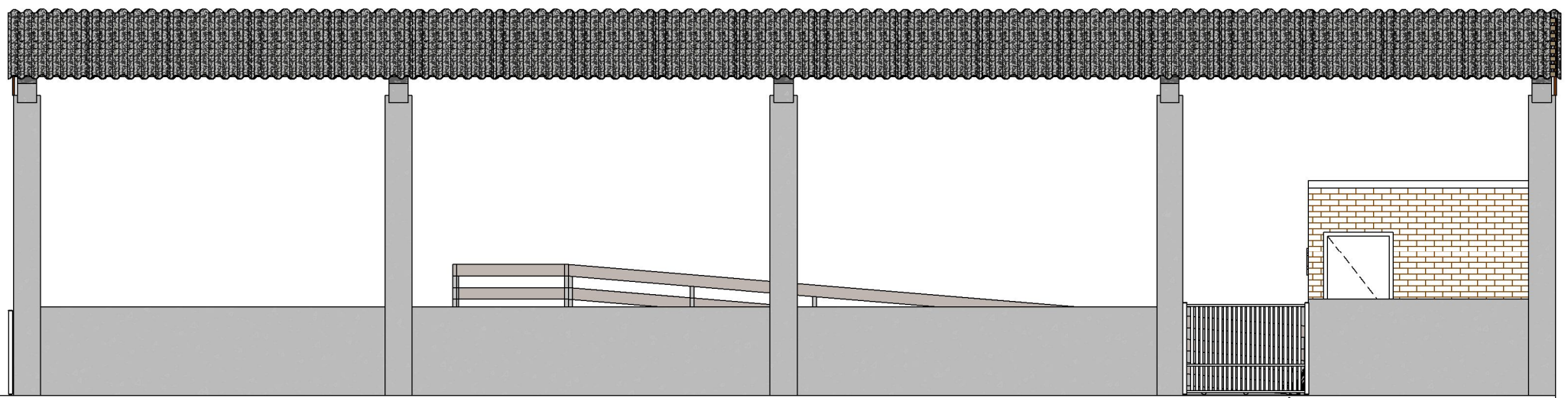
Projeto: Pavilhão Equoterapia Unicruz
 Descrição: Planta Baixa, cortes, Fachadas,
 Escala: Indicada
 Data: Maio 2022
 Arquiteto responsável: Ricardo Medeiros de Moraes



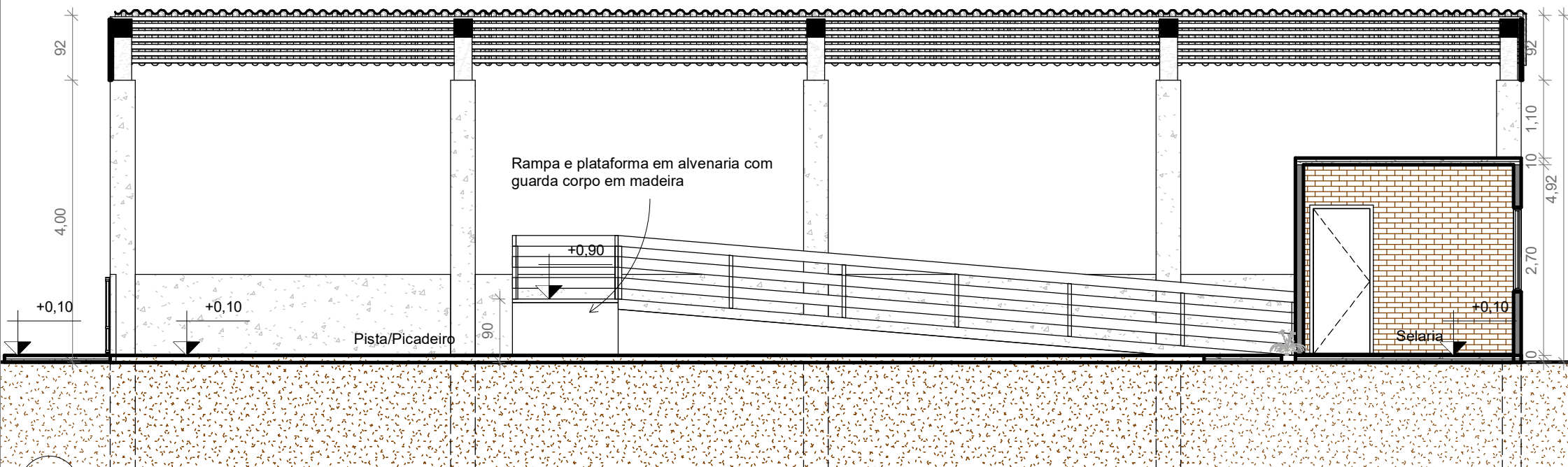
1 FACHADA FRONTAL
ESCALA 1 : 75



3 Corte AA
ESCALA 1 : 75

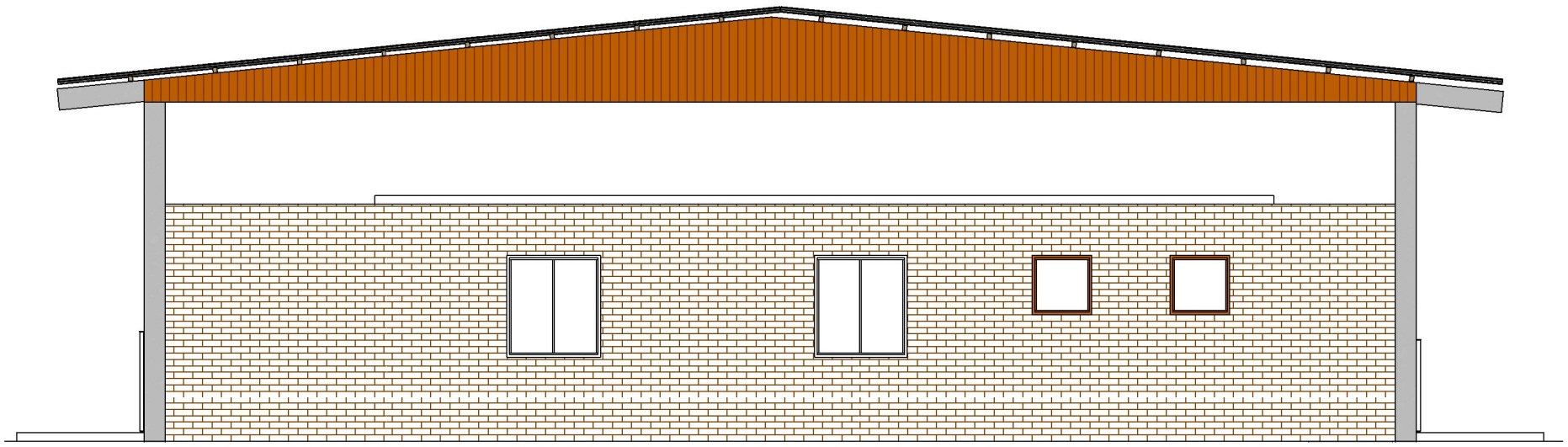


2 FACHADA LATERAL DIREITA
ESCALA 1 : 75

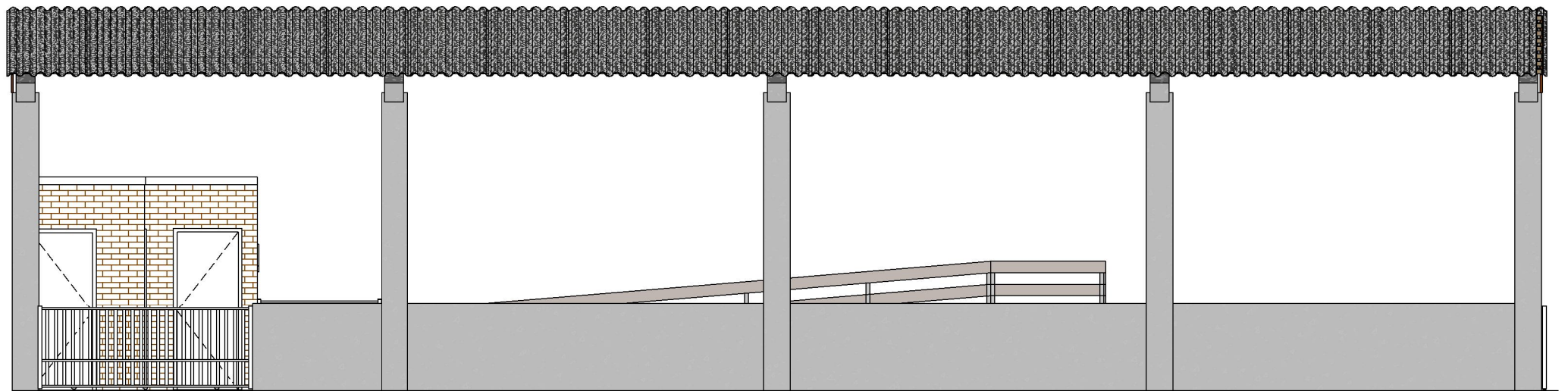


4 Corte BB
ESCALA 1 : 75

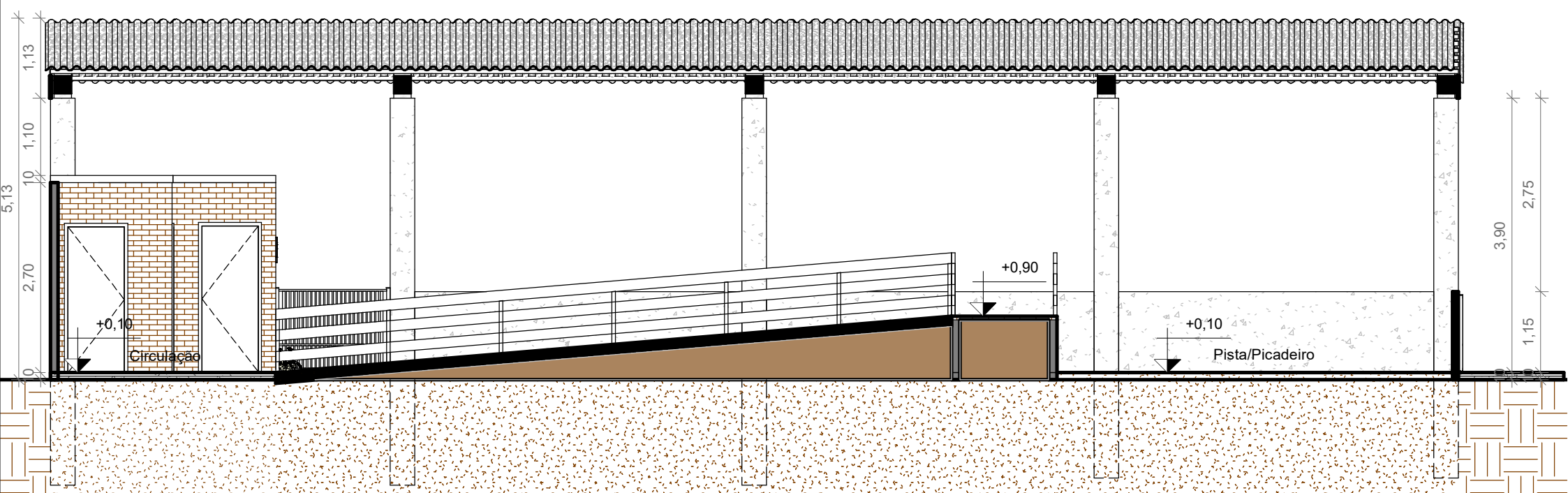




1 FACHADA FUNDOS
ESCALA 1:75

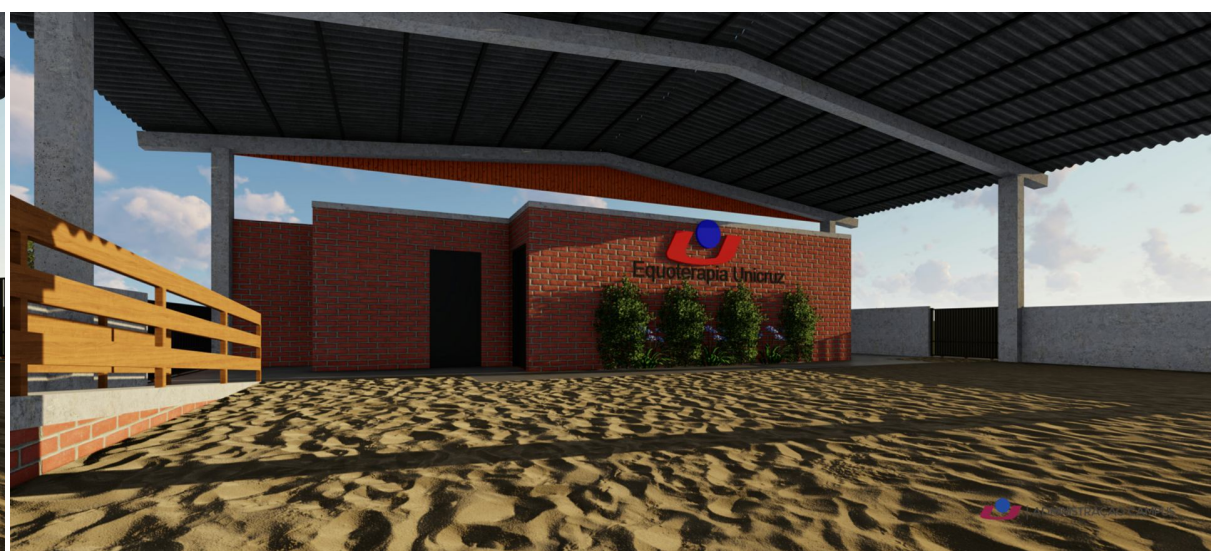
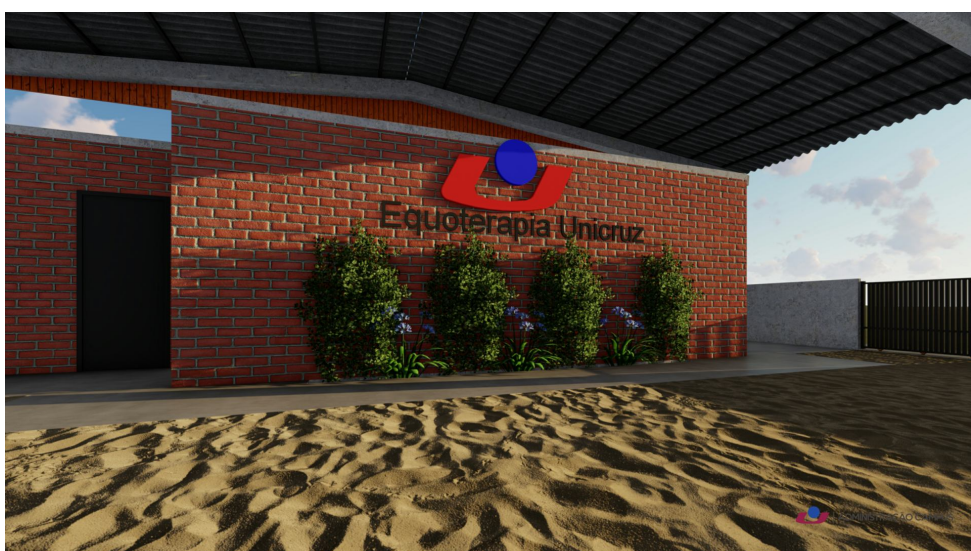


2 FACHADA LATERAL ESQUERDA
ESCALA 1:75



3 Corte CC
ESCALA 1:75





ADMINISTRAÇÃO DO CAMPUS

Projeto: Pavilhão Equoterapia Unicruz
 Descrição: Planta Baixa, cortes, Fachadas,
 Escala: Indicada
 Data: Maio 2022
 Arquiteto responsável: Ricardo Medeiros de Moraes